



Facilities Planning Team

December 4, 2018 Meeting

Building a Better Future for our Children and Community



Welcome & Introductions



Tonight's Goals

- Assess and understand the feedback received from the Community Input Meetings.
- Identify additional information you need for next week's meeting so that we can work on the grade-level configurations of the campuses.



Timeline

- Facilities Planning Team will meet Dec 4, 11, 18
- A recommendation must be made to the Board no later than January 6.
- The Board must take its first action by January 6.
- The Treasurer must file with the Dept. of Education and the Department of Taxation by January 7.
- Subsequent actions will take place in January and early February to place the bond issue on the May, 2019 ballot.

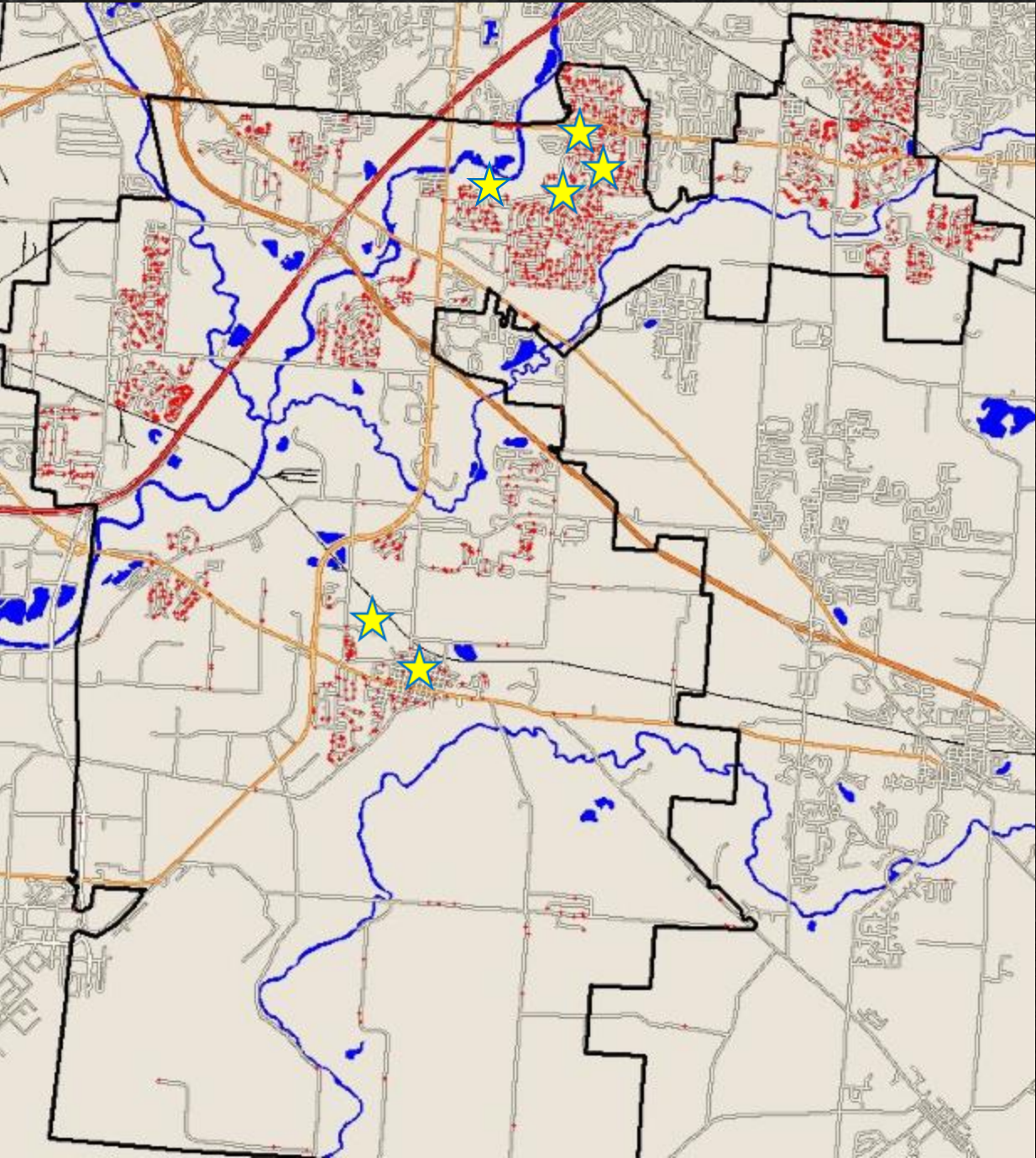


Community Input Meetings

- Three community input meetings
 - About 60 unique participants over the course of the three nights
 - Shared why new schools are necessary:
 - Severe overcrowding
 - Expensive, inefficient and difficult to secure modular classrooms
 - Conditions of existing facilities
 - Inability to provide access to programs in school closest to home
 - Current buildings cannot be retrofitted with up-to-date safety measures
 - Some buildings originally constructed as “Open Classroom Concept” which present noise and safety concerns.

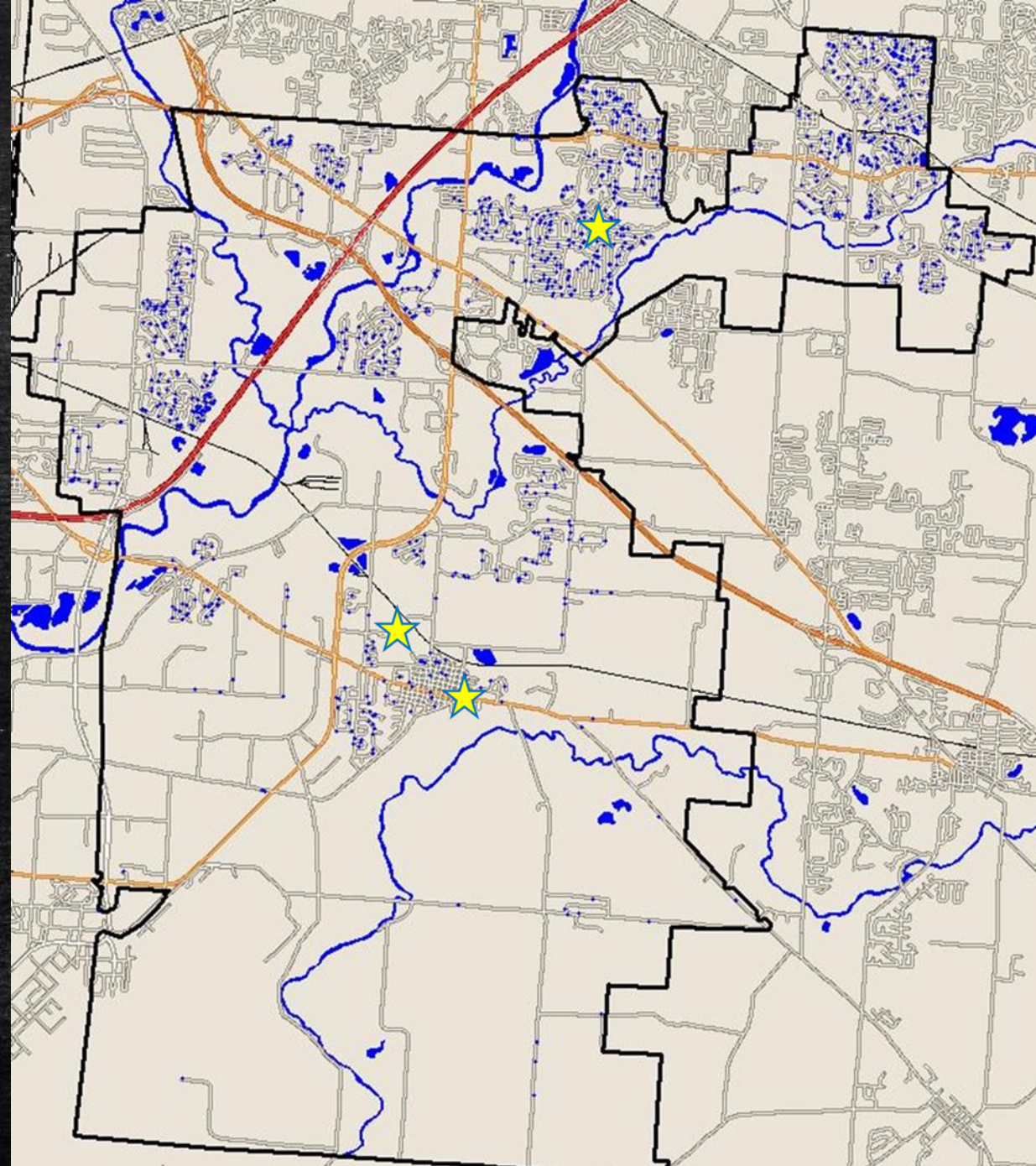


Distribution of Elementary School Students





Distribution of Middle School Students

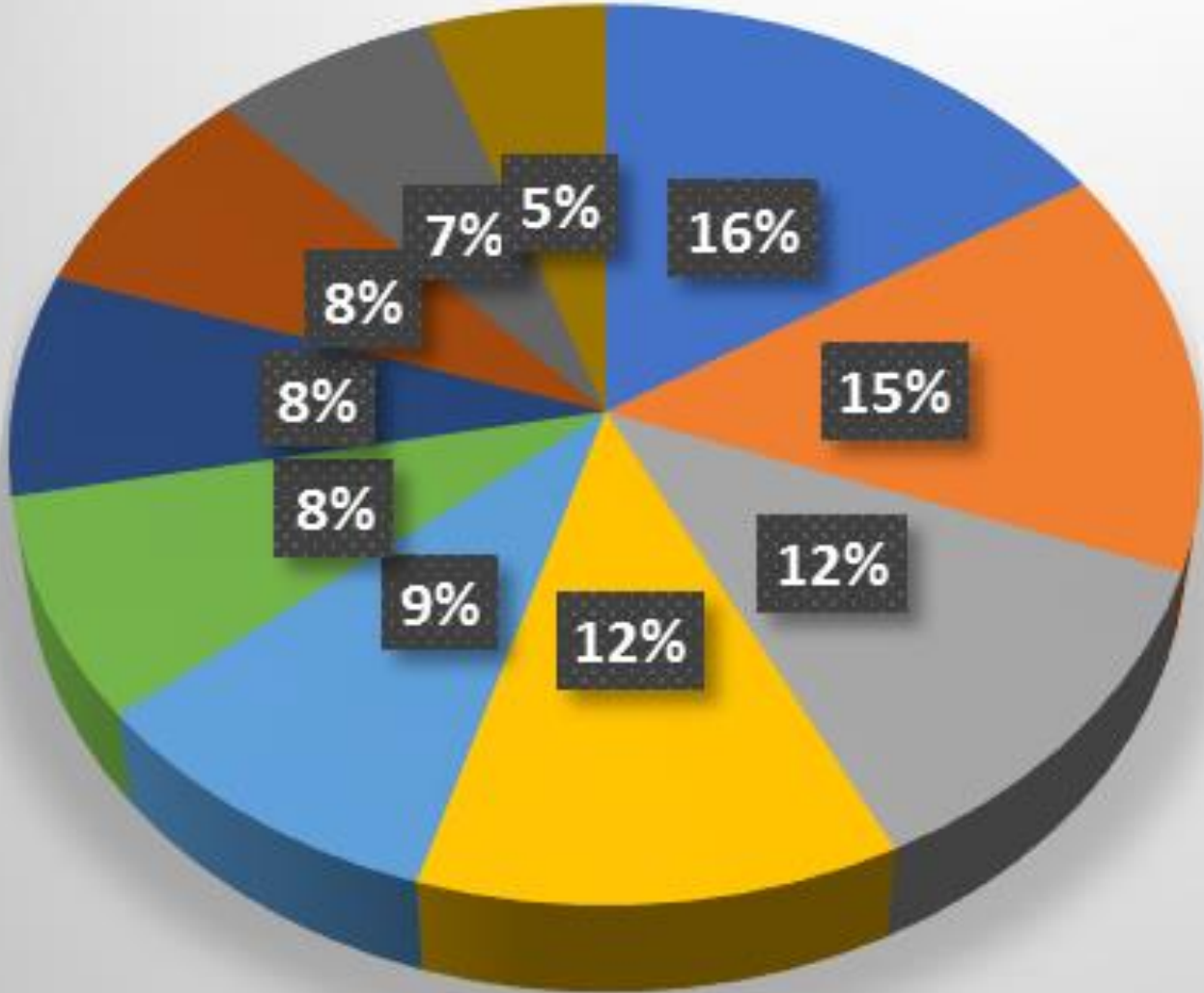




Community Input Meetings – Question #1

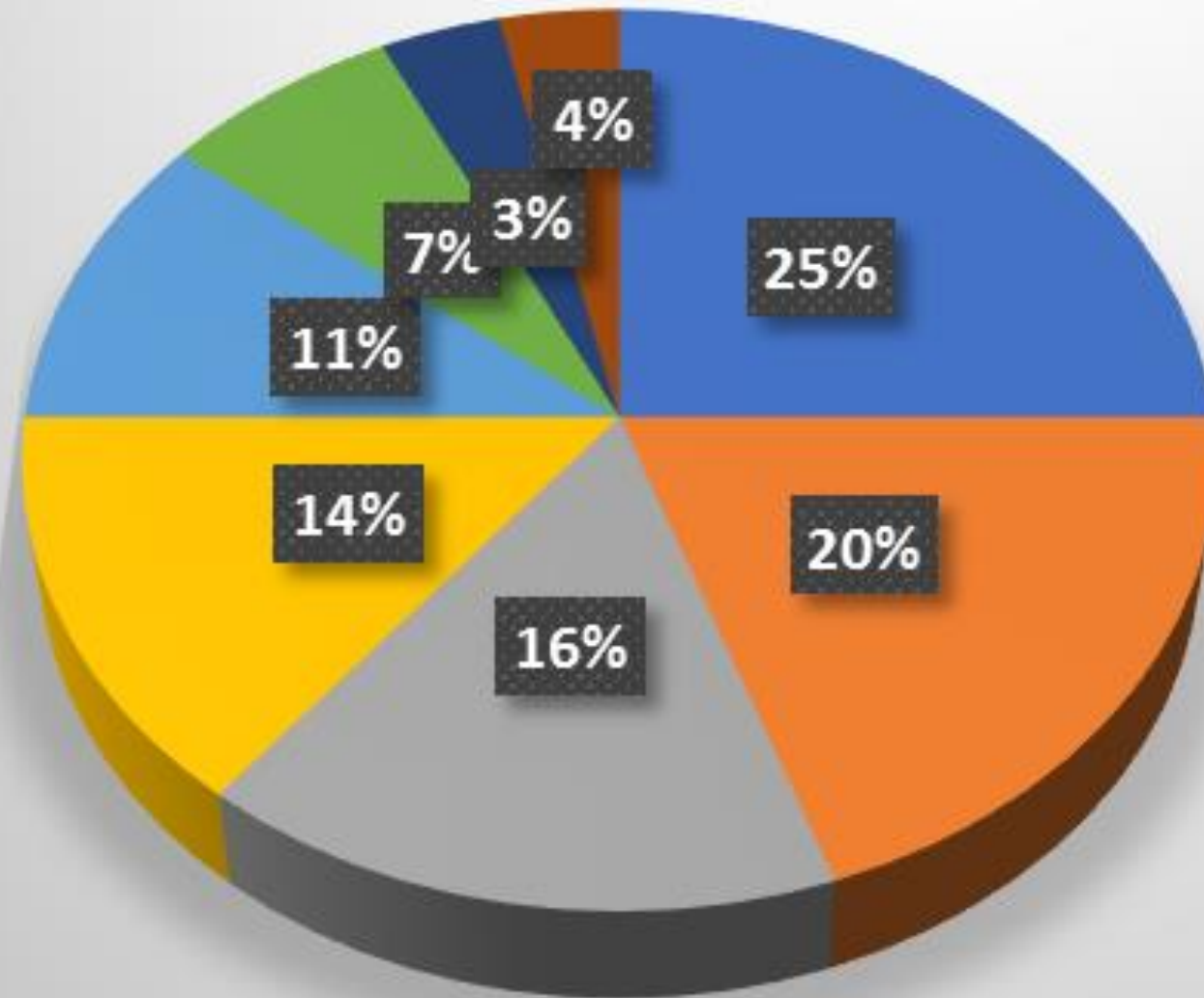
“If you could make changes to X building what would you change?”

Safety Concerns



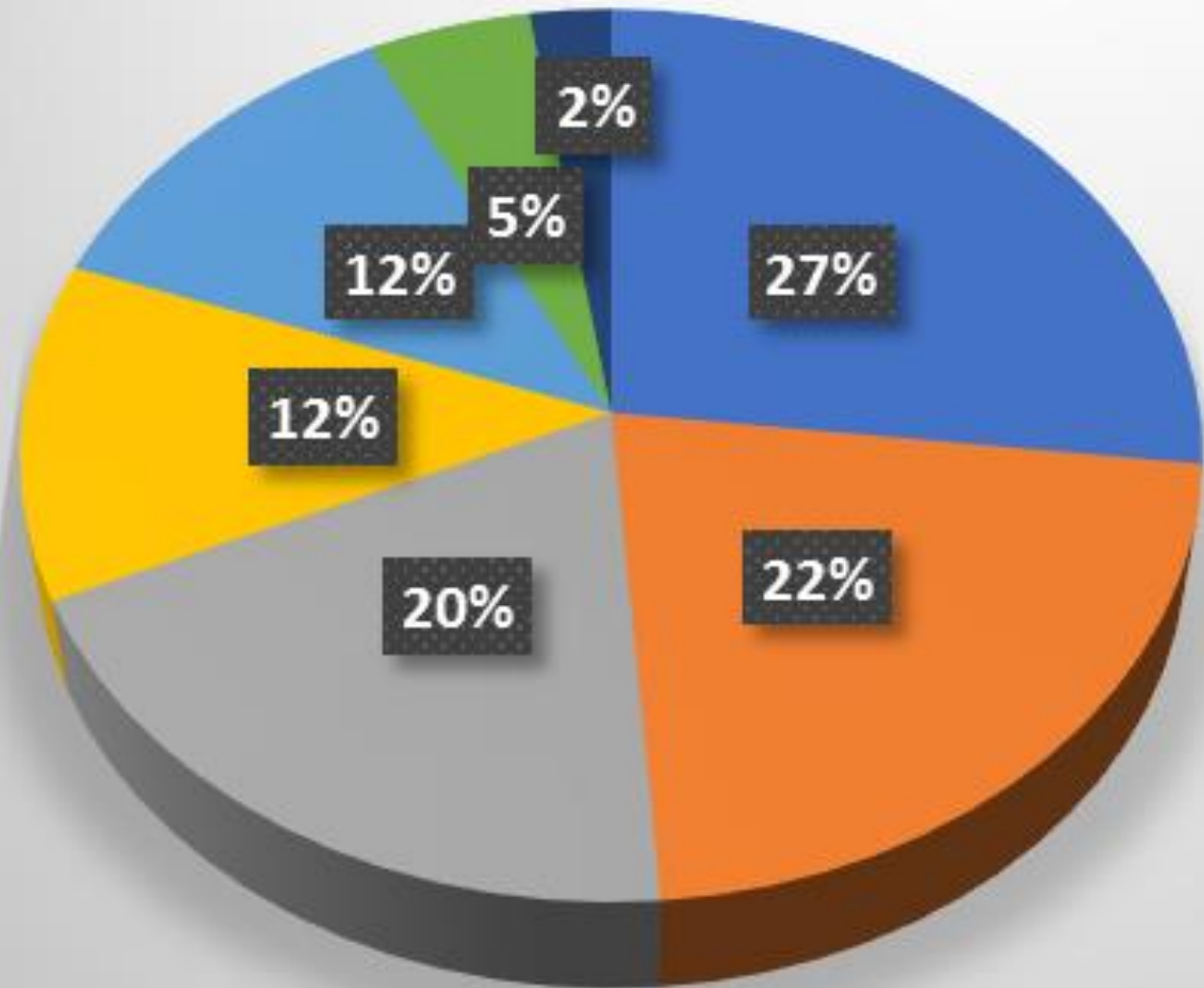
- Open classrooms
- Lockdown capability
- Outdated security systems
- Inadequate classroom space
- Modular classrooms
- Entry vestibule
- Inadequate parking
- Dark parking lots
- More security cameras
- Parking lot pedestrian safety

Classroom Environments



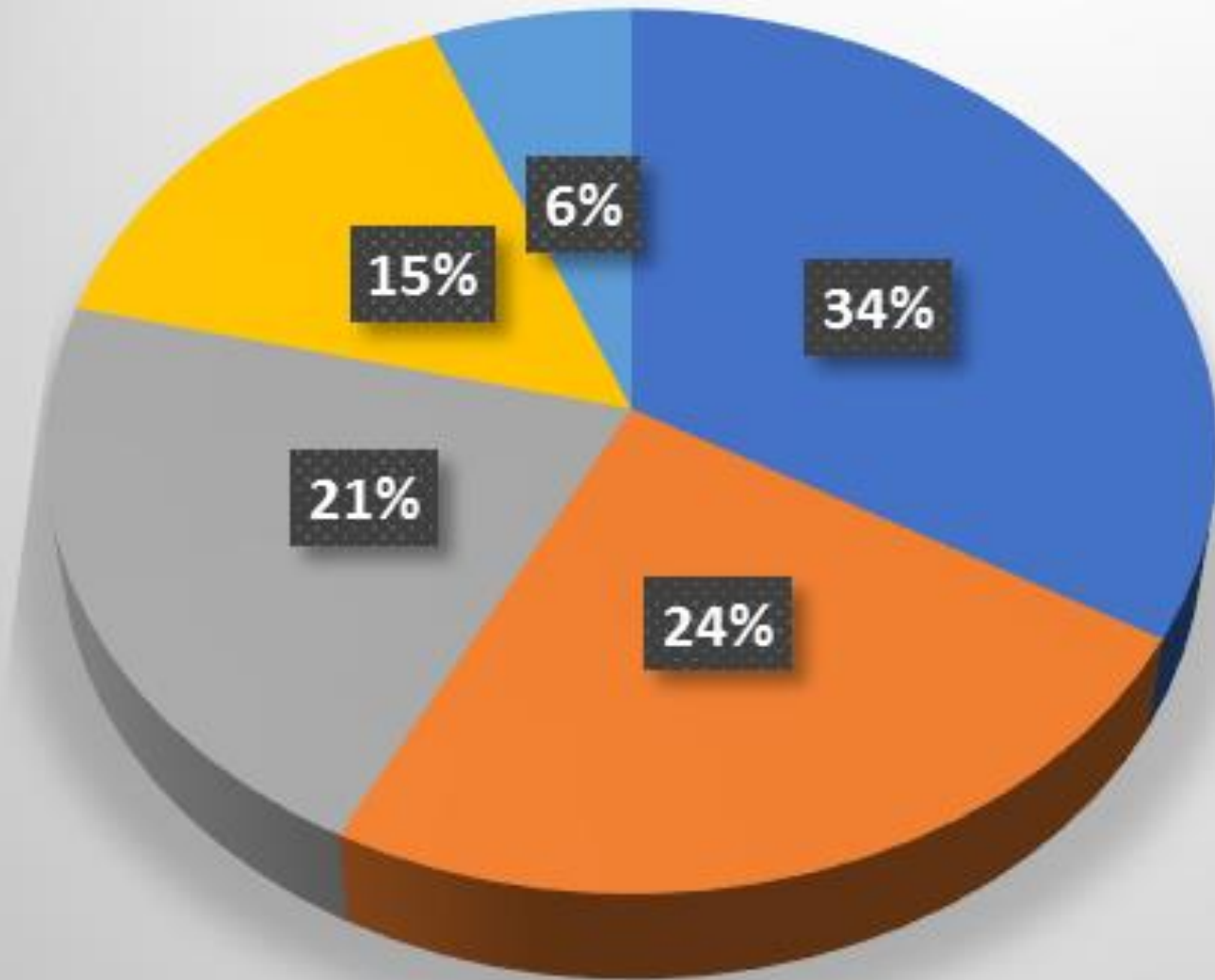
- Overcrowding
- No library
- Open classrooms/noise
- Modular classrooms
- Appropriate spaces
- HVAC issues
- Poor lighting
- Handicap assessability

Exterior Needs



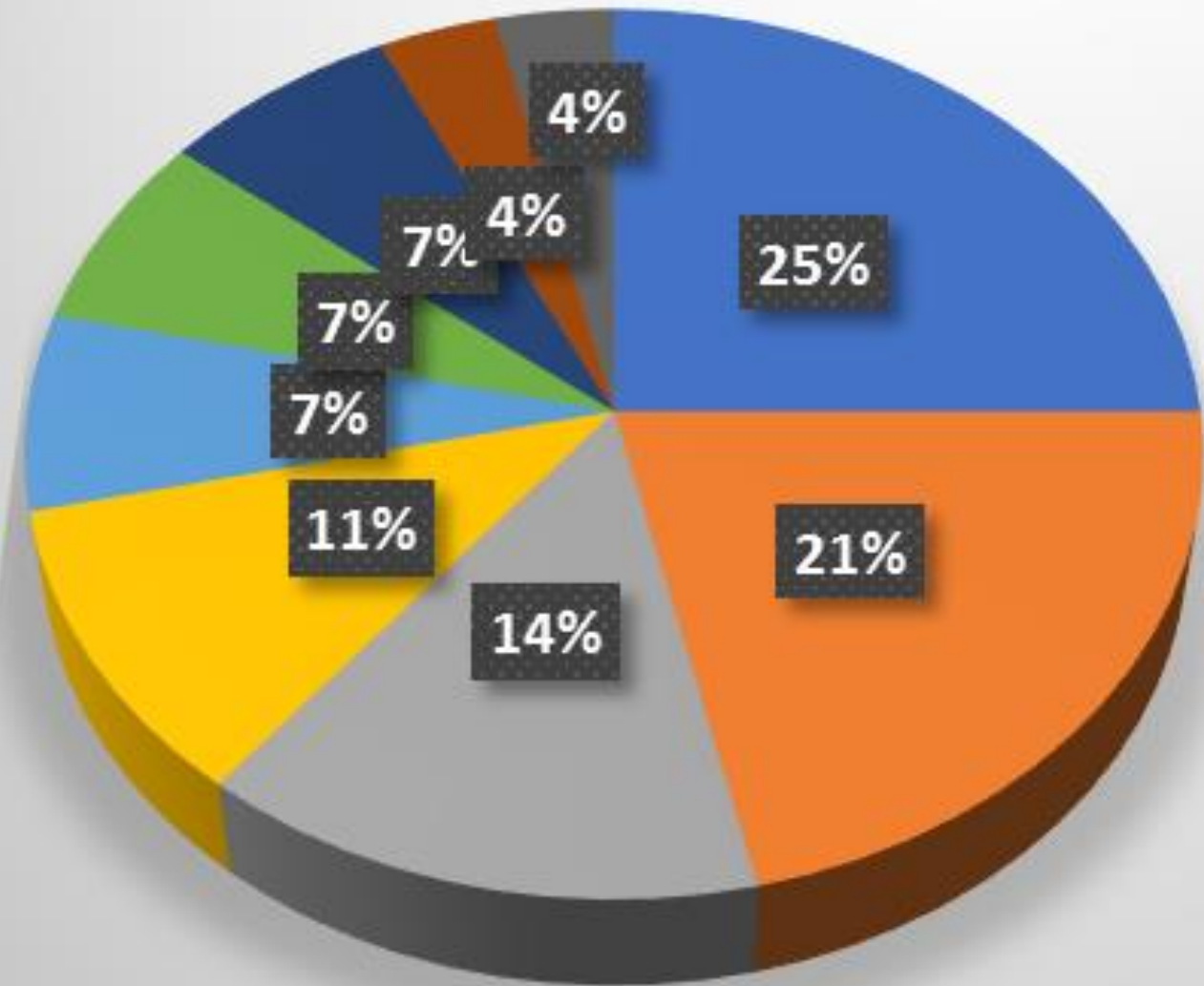
- Outdated playground equip.
- Bus loops/drop off areas
- Inadequate parking
- Handicap access to playgrounds
- Poor outdoor lighting
- Unfenced playgrounds
- Better MS athletic facilities

Community Use



- Inadequate parking
- Security during community use
- More outreach programs
- Poor outdoor lighting
- Update MS athletic fields

Other Needs



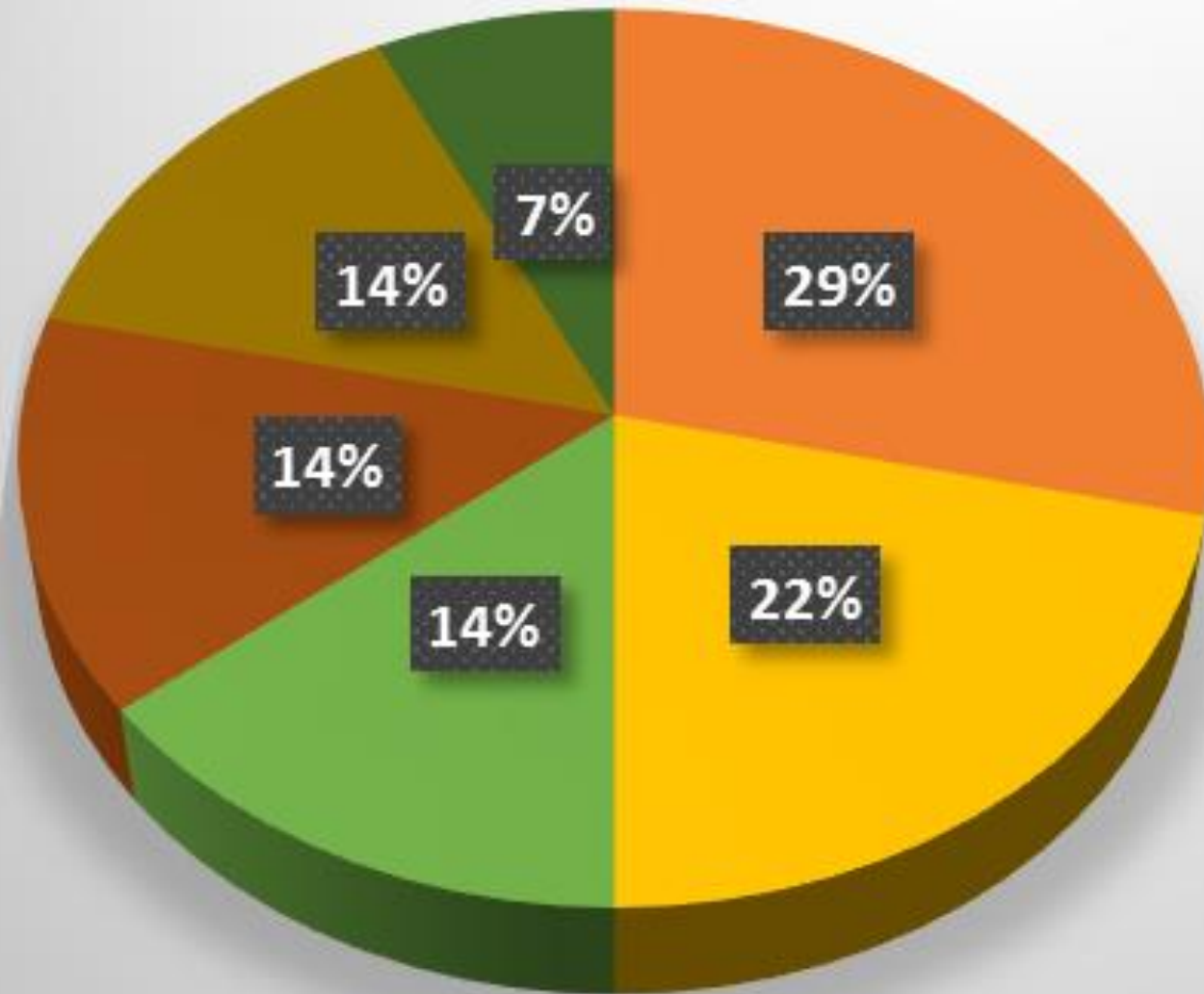
- Inefficient busing
- Planning for growth
- Parking lot safety
- Location of schools
- Lack of privacy
- Handicap accessibility
- Neighborhood schools
- Win-Win
- Age/condition of buildings



Community Input Meetings – Question #2

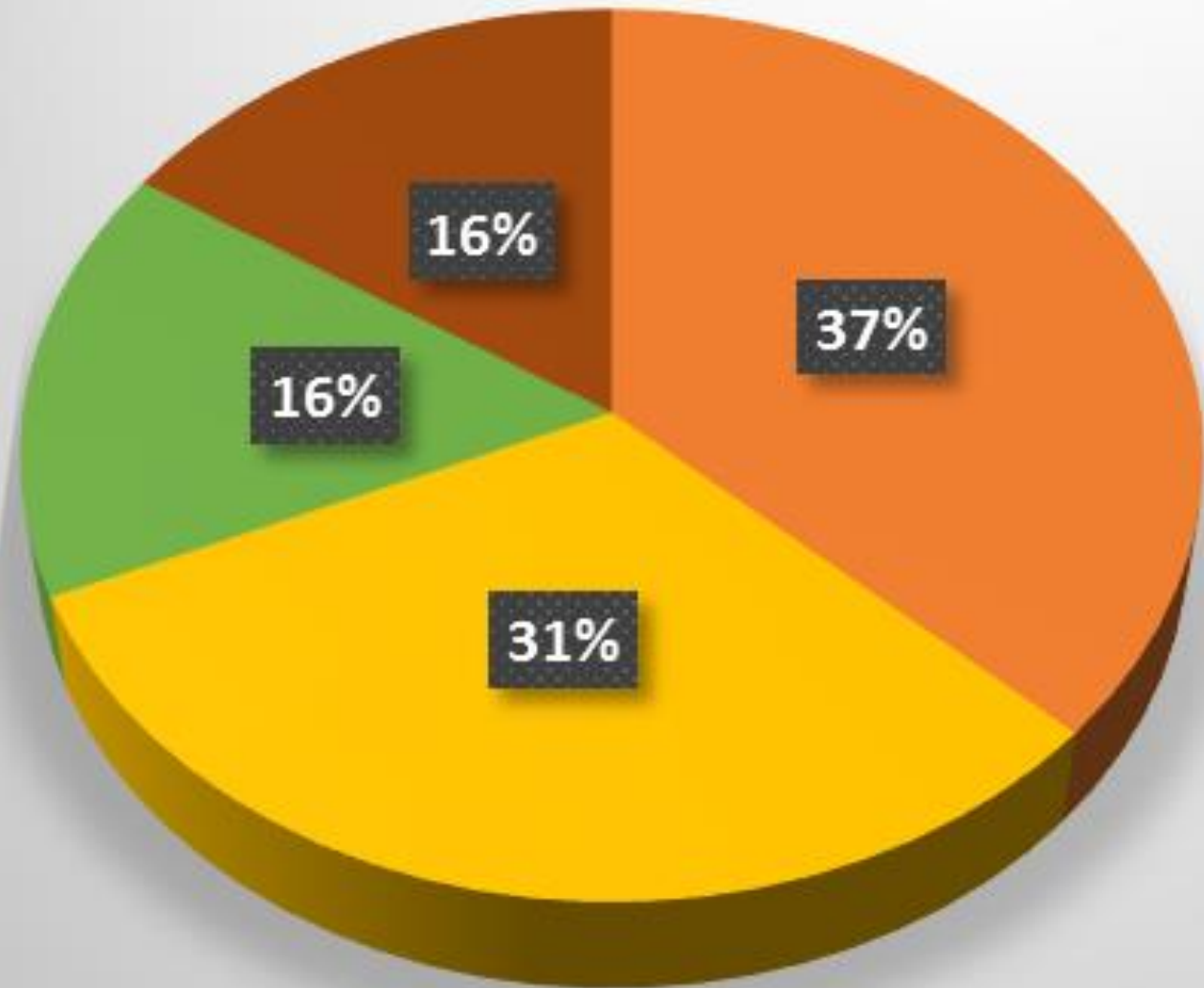
“When thinking about current buildings, what do you most value and/or what would you want to make sure we keep?”

Location(s)



- Close to population centers
- Kids close to home
- Sedalia/North location
- Glendening/South location
- Centralized location
- Same programs at all

Historical Connections



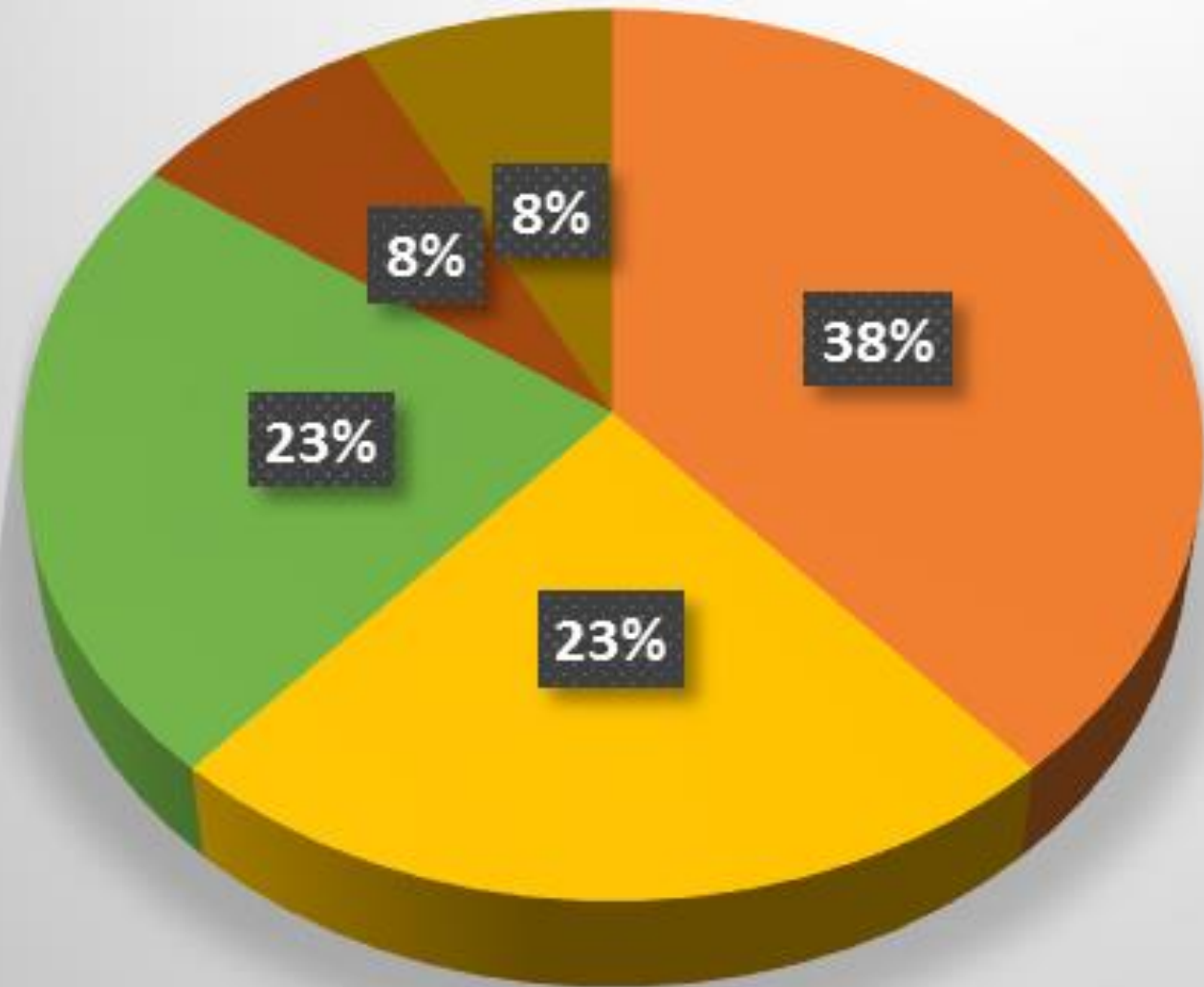
Artifacts from old buildings to new

Traditions across district

Repurpose Groveport ES

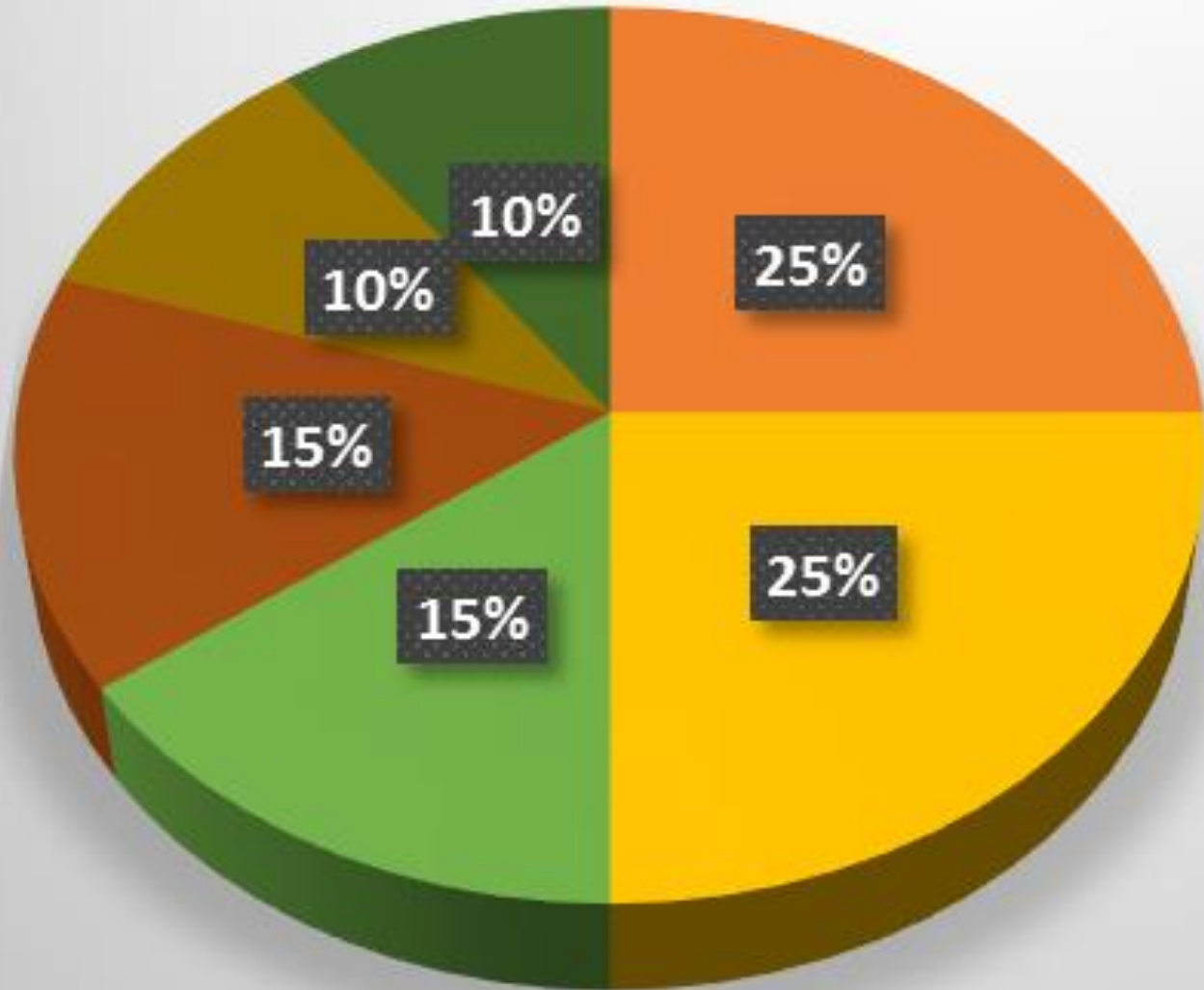
Keep Groveport ES

Community Use



- MS athletic fields
- Promote community use
- More play areas
- MS sports at one location
- Groveport auditorium

Other



- Same programs at all
- Timeless design
- Campus setting
- Halloween parade/school parties
- Concerned schools too big
- New high school



Community Input Meetings – Question #3

“If we were to construction schools in a campus-like setting, how would you rank the importance of the following?”

- **Location(s) of the schools**
- **Size of the schools (number of students)**
- **Efficiency of operation**
- **Cost of construction**
- **Travel time for students on buses**
- **Separation of grade levels**
- **Separate buses for older students and younger students**
- **Availability of identical programming (Gifted Services, ESL)**
- **Number of school transitions**
- **Ability to expand school building for enrollment growth**

Prioritizing Key Decisions

	Rank Order 1-10	Location(s) of the schools	Size of the Schools (Enrollment)	Efficiency of Operation	Cost of Construction	Travel Time for Students on Buses	Separation of Grade Levels	Separate Buses for Older/Younger Students	Availability of Identical Programs (Gifted Services/ESL)	Number of School Transitions	Ability to Expand for Enrollment Growth
TIER 1	1	17	11	8	9	4	15	11	11	4	5
	2	9	9	17	3	9	12	5	11	11	10
	3	11	7	9	7	11	8	7	10	2	11
TIER 2	4	9	8	12	6	12	5	8	7	8	9
	5	11	5	13	4	10	8	9	7	10	6
TIER 3	6	5	11	8	9	12	4	11	10	5	11
	7	7	6	6	5	12	12	10	9	7	10
	8	6	12	5	4	8	10	13	5	10	10
TIER 4	9	7	9	7	8	6	8	10	8	12	8
	10	4	8	1	31	2	4	2	8	17	6



Distribution of Students by Geographic Area

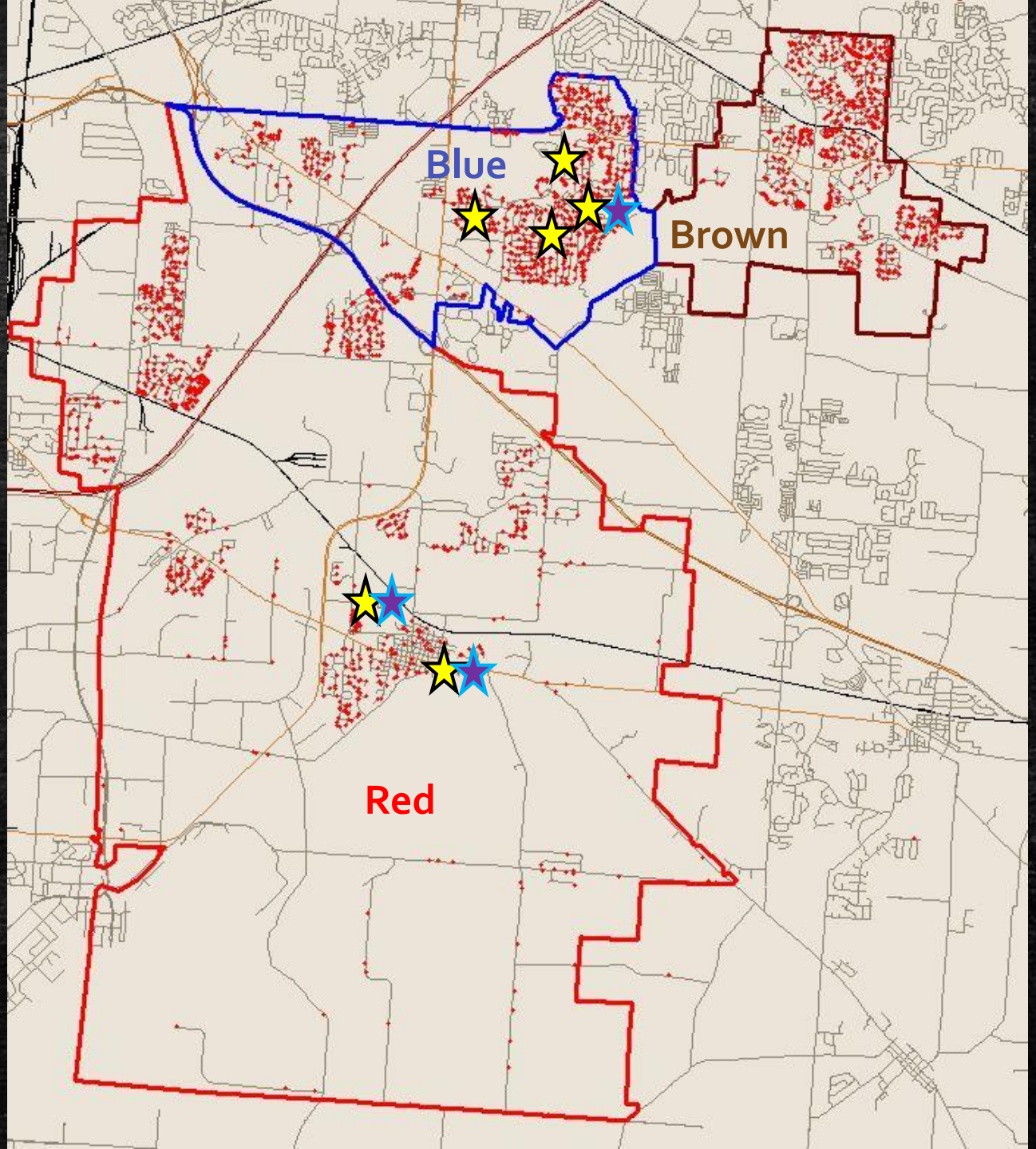
Red = 1,553 (K-5 = 1,009, 6-8 = 544)

Blue = 1,510 (K-5 = 998, 6-8 = 512)

Brown = 1,303 (K-5 = 870, 6-8 = 433)

★ = Elementary Schools

★ = Middle Schools





Prep for Next Meeting

- When we come back together next week, we want to begin having an in-depth discussion about the potential configurations of the campuses. Things to consider include:
 - How large should the buildings/campus be?
 - Should each of the they all be the same size buildings, or sized to accommodate enrollment in the immediate area?
 - How many campus sites would be considered optimum?
 - How would you recommend grade levels be configured?
- So that we can help you in your decision-making, is there any other information you feel would be helpful to have?
- Use sticky notes to identify other information you need or questions you have. Post your items on the white board.



Thank you!

